

[Overview](#)

[Goals](#)

[Actions Taken](#)

[Accomplishments](#)

[Other Enhancements](#)

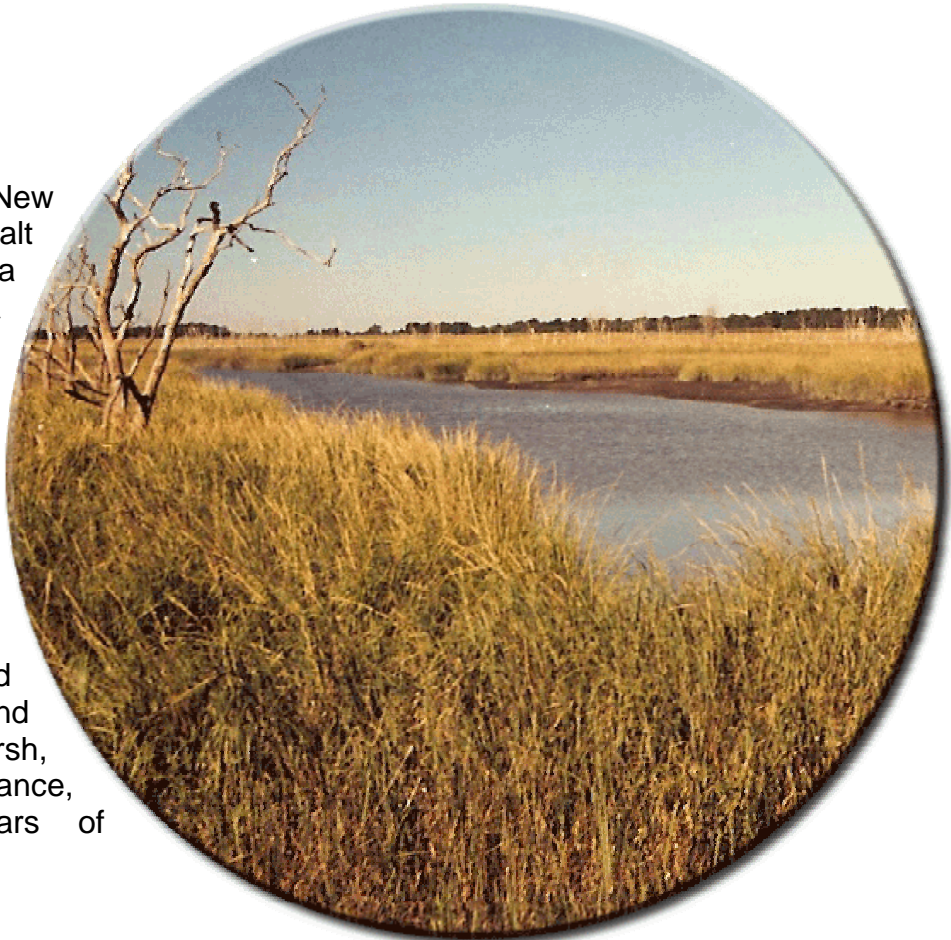
[Vegetative Cover Summary Chart](#)

[Pre-Restoration Vegetative Cover Map](#)

[Current Vegetative Cover Map](#)

Overview

Located in Cumberland County, New Jersey, the Maurice River Township Salt Hay Farm Wetland Restoration Site is a 1,396-acre site, which includes a wetland restoration area of 1,135 acres. Historically, a large portion of the farming area was vegetated with salt hay grass. As early as 1810, perimeter dikes were constructed and water control structures were installed to eliminate normal tidal inundation over the area. Large stands of *Phragmites* were present prior to restoration activities. Wetland enhancement and restoration efforts began in 1996, and were completed in 1998, producing marsh, indistinguishable in function and appearance, from natural marsh within 4 years of construction completion.



Goals

The goal of enhancement and restoration efforts for the site were to:

- Restore tidal flow and drainage
- Expand spawning and nursery habitat for aquatic species
- Allow *Spartina* spp. and other desirable marsh plants to re-vegetate
- Preserve wetlands and upland buffer

Actions Taken

The EEP took the following actions to achieve the enhancement and restoration goals for the site:

- Constructed channels and inlets
- Restored normal tidal flow to promote natural re-vegetation of *Spartina* spp. and other desirable marsh plants
- Created high marsh habitat

Accomplishments

As a result of actions taken by the EEP, the following has been accomplished:

- 1,135 acres of aquatic habitat has been added to the Delaware Estuary
- Re-vegetation by desirable plant species was achieved more rapidly than anticipated, meeting final success criteria in 2001
- The natural formation of small channels within the wetland restoration site was documented
- Additional habitat for horseshoe crab spawning was established

Other Enhancements

The EEP also completed a number of additional enhancements to improve and enhance environmental education, public access and long-term use of the site, including:

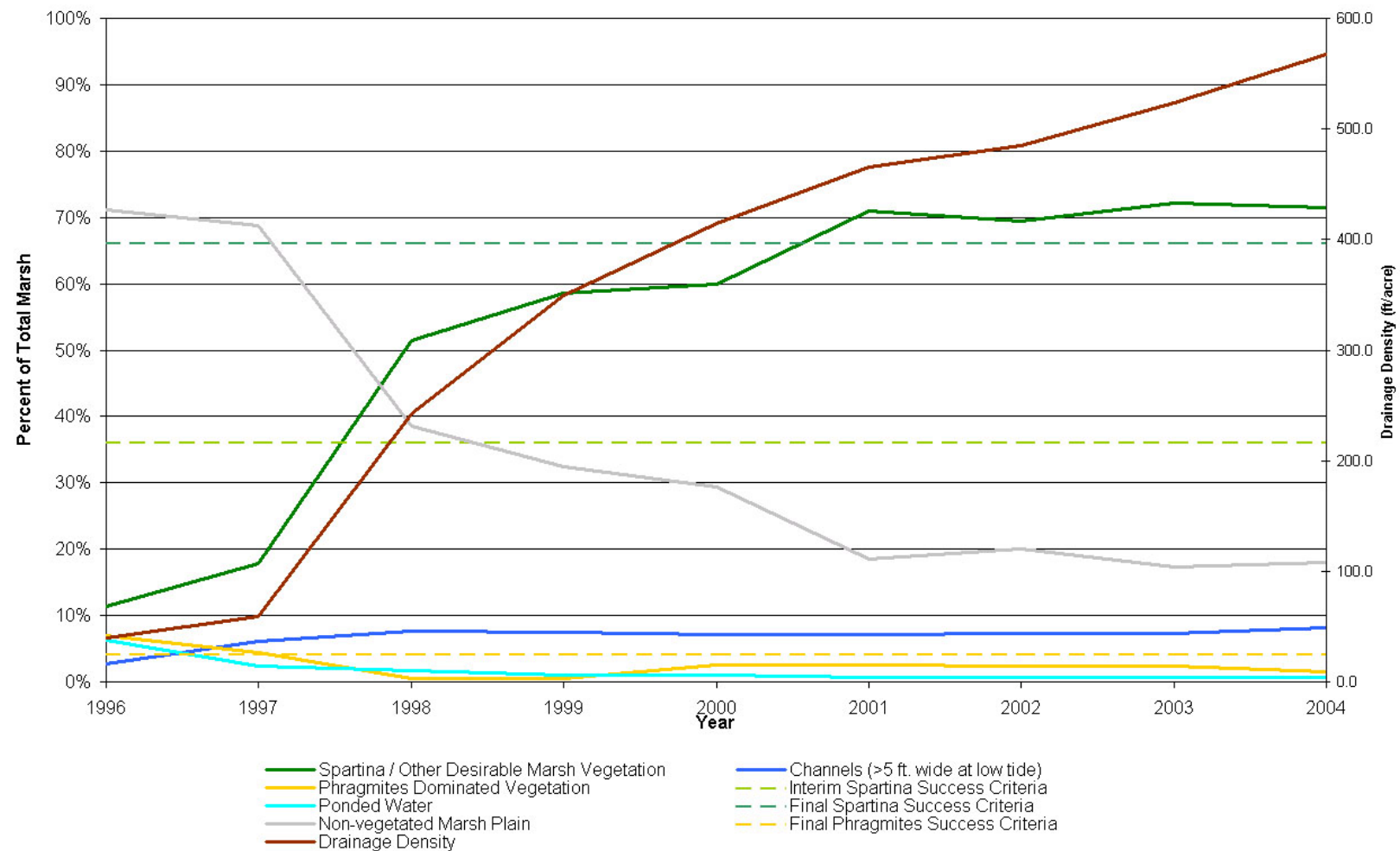
- Boat launch
- Two parking areas
- Observation platform





Maurice River Township Wetland Restoration Site Vegetative Cover Summary Chart

As shown by the limited coverage by *Phragmites* (yellow line) and desirable marsh vegetation (green line), this site was unvegetated marsh plain (grey area below) prior to restoration activities. The construction of channels re-established normal tidal flow. This increased drainage density and allowed *Spartina* to flourish. The red line (linear feet of channel per acre) indicates the increased aquatic habitat at this site.

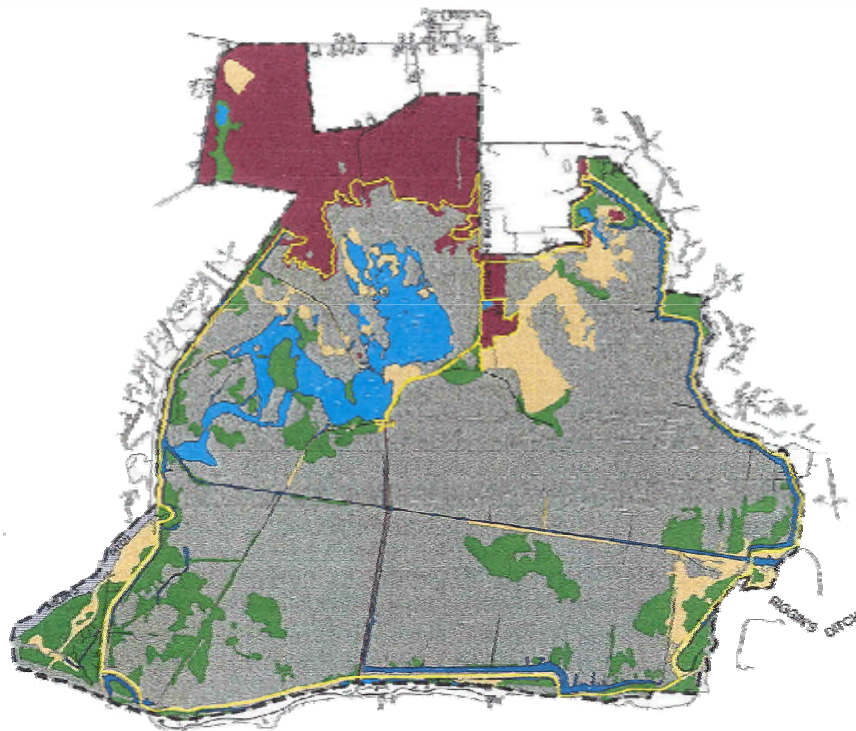




MAURICE RIVER TOWNSHIP SITE

Maurice River Township Site – 1996

Prior to restoration both *Spartina* (green shaded areas) and *Phragmites* (tan shaded areas) were present along the perimeter of the site and adjacent to the ponded water (blue shaded areas). However, most of the area was non-vegetated marsh plain (grey shaded areas).



Maurice River Township Site – 2004

The construction of channels restored normal tidal flow to the site. The spread of *Phragmites* (tan shaded areas) was controlled; and *Spartina* (green shaded areas) has re-populated a majority of the former unvegetated marsh plain (grey shaded areas).

